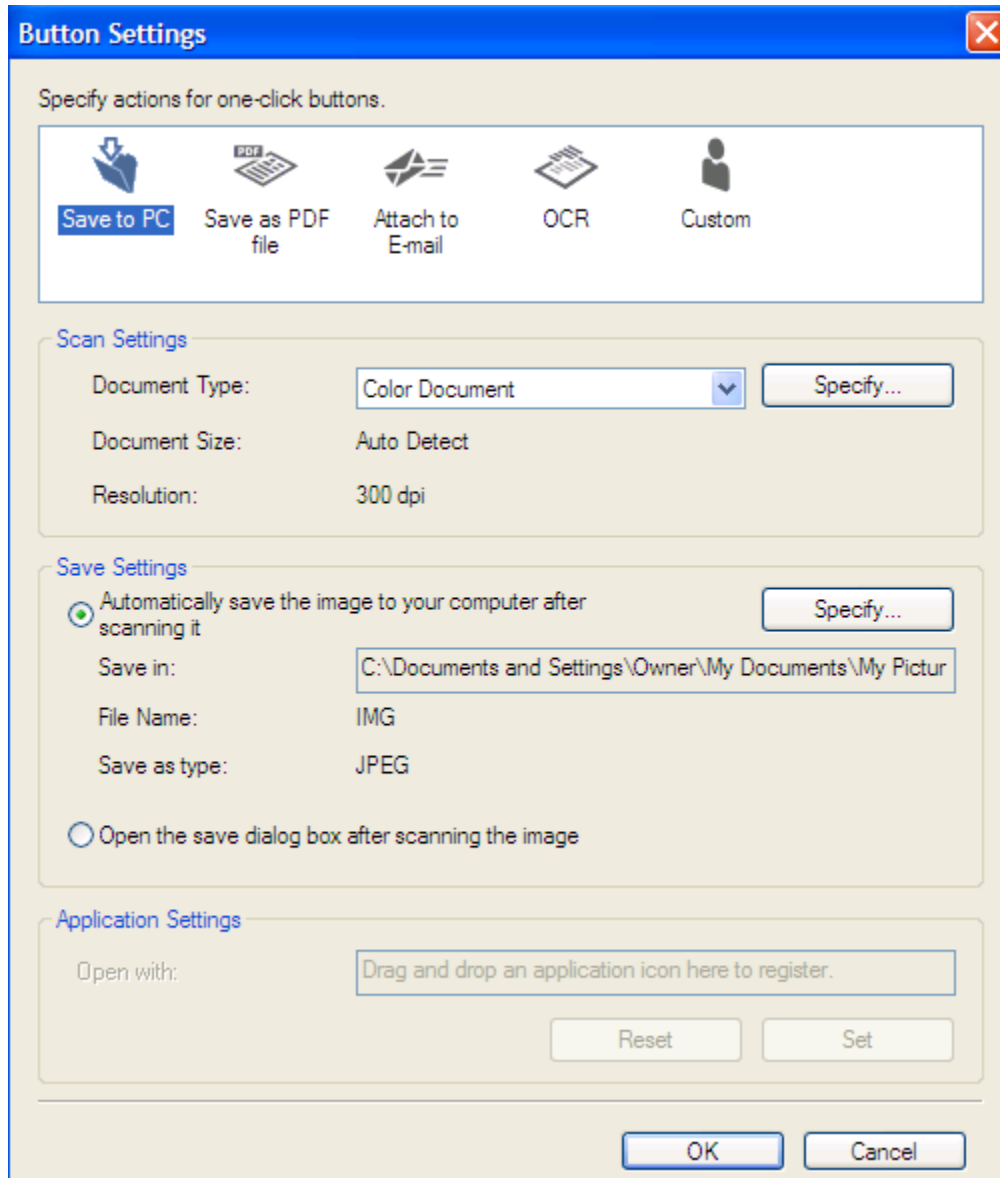


How I Scan Cards by Gunny

In this document I shall detail the process I utilize when scanning cards for the Trading Card Database. A good place to start is with the scanner. I use a Cannon PIXMA Printer/Scanner. The following settings are used:



The next thing to do is to scan the card. Once scanned, I use my graphics software to check the quality of the scan. I use Paint Shop Pro ver. 8.10 but I should think any quality graphics software package will work because the following steps use only basic functions.

In this example I am scanning the 1998-99 Topps Joe Sakic card. This is what the raw image looks like (left). The first thing that needs done is to use the crop tool to clean up the edges. Once the edges are cleaned up then I take the image to full size. This card came in at a size of 748X1040 pixels. With the card at full size I look at the quality of the image. Older cards tend to be very grainy. If that is the case then I use the soften function in Paint Shop Pro. This removes the grainy texture from the scan and really improves the smoothness of the colors. Newer cards may not need this function. Some cards may scan very darkly. Upper Deck Black Diamond are notorious for scanning darkly. To brighten the scan without losing too much contrast I use the Gamma Correction function set at around 1.40 that usually brightens things very nicely. Once I am done working on the image, I readjust the size. I use the resize function to bring the original image down to a size of around 375X520 pixels. When resizing images for upload I never make them bigger as that leads to a very splotchy looking image. I always reduce the size of the original to maintain clarity. In the Joe Sakic example you can see the before and after results. This was a nice card to scan because I did not have to use any of the functions to work on the original.

